

**MAR 13 - 19, 2023**

The Queens luxury real estate market, defined as all properties priced \$1M and above, saw 14 contracts signed this week, made up of 4 condos, and 10 houses. The previous week saw 22 deals. For more information or data, please reach out to a Compass agent.

**\$1,567,492**

Average Asking Price

**\$1,399,000**

Median Asking Price

**\$838**

Average PPSF

**3%**

Average Discount

**\$21,944,887**

Total Volume

**121**

Average Days On Market

114 Malba Drive in Whitestone entered contract this week, with a last asking price of \$2,999,000. Built in 1935, this home spans 4,688 square feet with 5 beds and 4 full baths. It features over 19,000 square feet of property, water views, a formal living room and dining room, fireplace mantels, custom millwork, ornate moldings, architectural details, and much more.

Also signed this week was 18-32 Steinway Street in Astoria, with a last asking price of \$1,850,000. This historic brick homes offers 4 beds and 3 full baths. It features high ceilings, original details, a full basement, a large backyard, and much more.

**4**

Condo Deal(s)

**0**

Co-op Deal(s)

**10**

Townhouse Deal(s)

**\$1,372,972**

Average Asking Price

**\$0**

Average Asking Price

**\$1,645,300**

Average Asking Price

**\$1,373,944**

Median Asking Price

**\$0**

Median Asking Price

**\$1,449,000**

Median Asking Price

**\$1,384**

Average PPSF

**N/A**

Average PPSF

**\$633**

Average PPSF

**981**

Average SqFt

**N/A**

Average SqFt

**2,599**

Average SqFt



### 114 MALBA DR

Whitestone

Type	Townhouse	Status	Contract
SqFt	4,688	Beds	5
PPSF	\$640	Fees	\$2,434

Ask	\$2,999,000
Baths	4
DOM	339



### 18-32 STEINWAY ST

Astoria

Type	Townhouse	Status	Contract
SqFt	N/A	Beds	4
PPSF	N/A	Fees	\$5,366

Ask	\$1,850,000
Baths	3
DOM	19

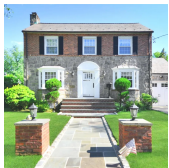


### 54-18 94TH ST

Elmhurst

Type	Townhouse	Status	Contract
SqFt	N/A	Beds	6
PPSF	N/A	Fees	N/A

Ask	\$1,758,000
Baths	3
DOM	61



### 330 KNOLLWOOD AVE

Douglaston

Type	Townhouse	Status	Contract
SqFt	2,858	Beds	4
PPSF	\$591	Fees	\$1,438

Ask	\$1,690,000
Baths	3
DOM	20

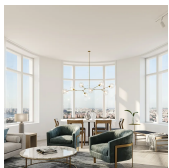


### 56-12 208TH ST

Bayside

Type	Townhouse	Status	Contract
SqFt	2,363	Beds	7
PPSF	\$634	Fees	\$980

Ask	\$1,498,000
Baths	4
DOM	61



### 41-05 29TH ST #23C

Long Island City

Type	Condo	Status	Contract
SqFt	N/A	Beds	2
PPSF	N/A	Fees	\$1,711

Ask	\$1,449,000
Baths	2
DOM	N/A

Compass is a licensed real estate broker and abides by Equal Housing Opportunity laws. All material presented herein is intended for informational purposes only. Information is compiled from sources deemed reliable but is subject to errors, omissions, changes in price, condition, sale, or withdrawal without notice. No statement is made as to the accuracy of any description. All measurements and square footages are approximate. This is not intended to solicit property already listed. Nothing herein shall be construed as legal, accounting or other professional advice outside the realm of real estate brokerage.



### 80-52 LANGDALE ST

Floral Park

**Type** Townhouse  
**Sqft** 2,208  
**PPSF** \$634

**Status** Contract  
**Beds** 4  
**Fees** \$755

**Ask** \$1,399,999  
**Baths** 3  
**DOM** 90



### 5-09 48TH AVE #5R

Hunters Point

**Type** Condo  
**Sqft** 1,093  
**PPSF** \$1,280

**Status** Contract  
**Beds** 2  
**Fees** \$1,487

**Ask** \$1,398,000  
**Baths** 2  
**DOM** 43



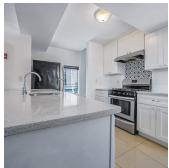
### 102-15 63RD AVE

Forest Hills

**Type** Townhouse  
**Sqft** 1,680  
**PPSF** \$809

**Status** Contract  
**Beds** 4  
**Fees** \$574

**Ask** \$1,359,000  
**Baths** 3  
**DOM** 349



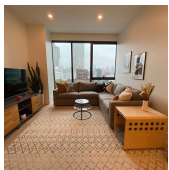
### 124-16 5TH AVE

College Point

**Type** Townhouse  
**Sqft** 1,800  
**PPSF** \$750

**Status** Contract  
**Beds** 5  
**Fees** \$913

**Ask** \$1,350,000  
**Baths** 2  
**DOM** 203



### 5 COURT SQUARE #7E

Hunters Point

**Type** Condo  
**Sqft** 878  
**PPSF** \$1,538

**Status** Contract  
**Beds** 2  
**Fees** \$1,689

**Ask** \$1,349,888  
**Baths** 2  
**DOM** 162



### 84-79 160TH ST

Jamaica Hills

**Type** Townhouse  
**Sqft** 2,250  
**PPSF** \$577

**Status** Contract  
**Beds** 6  
**Fees** \$659

**Ask** \$1,299,000  
**Baths** 3  
**DOM** 130

Compass is a licensed real estate broker and abides by Equal Housing Opportunity laws. All material presented herein is intended for informational purposes only. Information is compiled from sources deemed reliable but is subject to errors, omissions, changes in price, condition, sale, or withdrawal without notice. No statement is made as to the accuracy of any description. All measurements and square footages are approximate. This is not intended to solicit property already listed. Nothing herein shall be construed as legal, accounting or other professional advice outside the realm of real estate brokerage.



### 20-48 STEINWAY AVE #PH

Astoria

<b>Type</b>	Condo	<b>Status</b>	Contract	<b>Ask</b>	\$1,295,000
<b>Sqft</b>	972	<b>Beds</b>	2	<b>Baths</b>	2
<b>PPSF</b>	\$1,333	<b>Fees</b>	\$1,079	<b>DOM</b>	35



### 79-67 68TH RD

Middle Village

<b>Type</b>	Townhouse	<b>Status</b>	Contract	<b>Ask</b>	\$1,250,000
<b>Sqft</b>	2,940	<b>Beds</b>	8	<b>Baths</b>	6
<b>PPSF</b>	\$425	<b>Fees</b>	\$1,035	<b>DOM</b>	60

Compass is a licensed real estate broker and abides by Equal Housing Opportunity laws. All material presented herein is intended for informational purposes only. Information is compiled from sources deemed reliable but is subject to errors, omissions, changes in price, condition, sale, or withdrawal without notice. No statement is made as to the accuracy of any description. All measurements and square footages are approximate. This is not intended to solicit property already listed. Nothing herein shall be construed as legal, accounting or other professional advice outside the realm of real estate brokerage.

© 2020 Compass. This report and information provided in this report are proprietary to Compass and may not be sold, used or reprinted, in whole or in part, without the prior written consent in each instance of Compass. Data is subject to revision. Sourced from Compass proprietary database. All rights reserved.

[compass.com](https://www.compass.com)